

## Analog control units

## Mandos analógicos

### 1 Channel

- To be installed with TC10 and / or TC25
- Mono or stereo installation
- Minimum load impedance: 8  $\Omega$  per channel
- Regulation: 32 dB
- Dimensions: 44 x 44 x 35 mm



### 1 Canal

- Instalación con TC10 y / o TC25
- Instalación estéreo o mono
- Impedancia mínima de carga: 8  $\Omega$  por canal
- Margen de regulación: 32 dB
- Dimensiones: 44 x 44 x 35 mm

TMH04



### 1 Channel with push button

- Same features as TMH04
- Push button for FM stations searching



### 1 Canal con pulsador

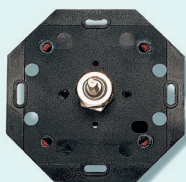
- Mismas características que TMH04
- Pulsador para búsqueda de emisoras

TMH08



### 1 Channel universal

- Same features as TMH04
- Series: Arco, Olas, Simon 75, Simon 88 (using manufacturer trimming)
- Dimensions: 71 x 71 x 53 mm



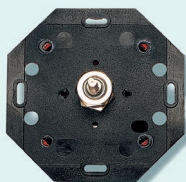
### 1 Canal universal

- Mismas características que TMH04
- Series: Arco, Olas, Simon 75, Simon 88 (utilizando frontales del fabricante)
- Dimensiones: 71 x 71 x 53 mm

TME3025

### 1 Channel universal with push button

- Same features as TMH04
- Push button for FM stations searching
- Series: Arco, Olas, Simon 75, Simon 88 (using manufacturer trimming)
- Dimensions: 71 x 71 x 53 mm



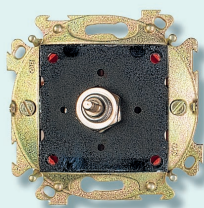
### 1 Canal universal con pulsador

- Mismas características que TMH04
- Pulsador para búsqueda de emisoras
- Series: Arco, Olas, Simon 75, Simon 88 (utilizando frontales del fabricante)
- Dimensiones: 71 x 71 x 53 mm

TME302P

### 1 Channel universal for Eunea series

- Same features as TMH04
- Series: SM100, SM180, SM200 (using manufacturer trimming)
- Dimensions: 71 x 71 x 53 mm



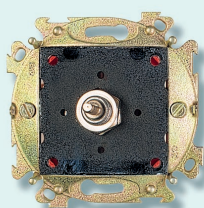
### 1 Canal universal series Eunea

- Mismas características que TMH04
- Series: SM100, SM180, SM200 (utilizando frontales del fabricante)
- Dimensiones: 71 x 71 x 53 mm

TME3025E

### 1 Channel universal with push button for Eunea series

- Same features as TMH04
- Push button for FM stations searching
- Series: SM100, SM180, SM200 (using manufacturer trimming)
- Dimensions: 71 x 71 x 53 mm



### 1 Canal universal con pulsador series Eunea

- Mismas características que TMH04
- Pulsador para búsqueda de emisoras
- Series: SM100, SM180, SM200 (utilizando frontales del fabricante)
- Dimensiones: 71 x 71 x 53 mm

TME302PE